

## Catchpool Restoration Project – Revised Plan – 2018

### Project Vision

*“A valley of lush, lofty lowland broadleaf forest sustaining abundant and healthy native biodiversity and attracting enthusiastic visitors to the main entrance of the Remutaka Park.”*

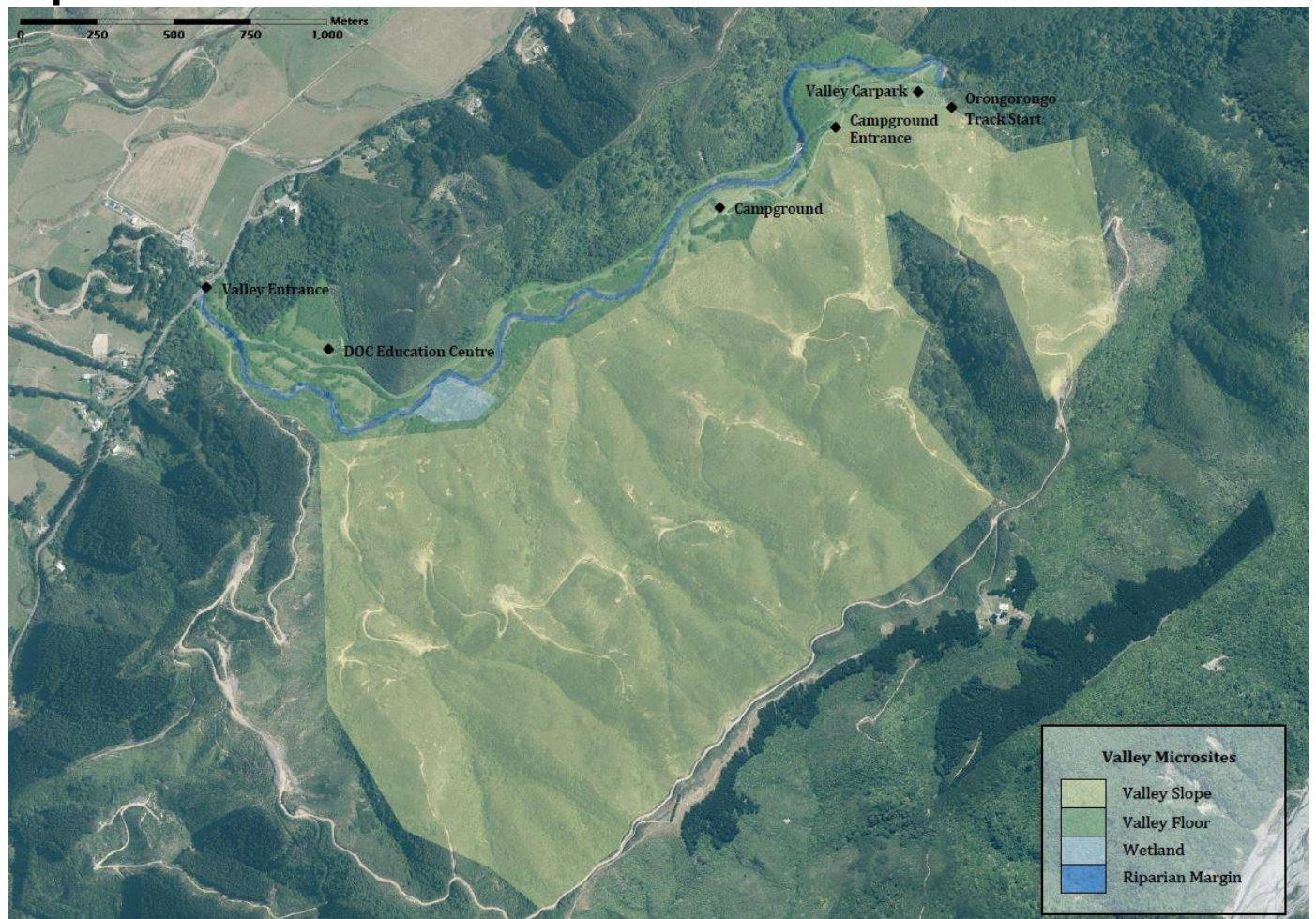
### Restoration Goals

1. Restore vegetative communities characteristic of the Remutaka range valley ecosystems.
2. Provide and extend high quality habitat for the indigenous fauna of the Remutaka ranges.
3. Enhance the aesthetic value of the valley, particularly the south eastern valley slopes.
4. Provide a means for community engagement and education in the valley.

### Management Objectives

1. Eradicate wilding pines from the valley slopes.
2. Eradicate exotic weed species from the valley.
3. Enhance and enrich natural succession on the valley slopes.
4. Restore characteristic plant communities in the river valley, wetland and on riparian margins.
5. Reduce the threats of pest animals to revegetation success.
6. Increase the abundance and health of native biodiversity in the valley.
7. Enhance the overall amenity value of the park.
8. Facilitate community engagement and participation in the valley.

### Map of Restoration Zones



## **Simple Strategy**

1. Collect seed from the park
2. Grow them in our nursery
3. Plant them out in Winter with the help of hundreds of volunteers
4. Release and maintain the plants during Summer
5. Bust weeds and control invasive pests
6. Re-introduce species that were missing from the park due to invasive pests and human activity
7. Monitor outcomes

## **Accomplished to date**

Thousands of native trees planted in all of the newly designated zones

Seedling nursery established

Permit to collect seed from within the Park granted

Tools & equipment acquired

Restoration Plan, including planting lists and methods review, thoroughly revised and updated

Access cut to wetlands area for planned future restoration

Thousands of wilding pines, acacia and gum trees and other woody weeds removed

Species (such as native mistletoe) which were extinct in the Park have been reintroduced

Thousands of school children and hundreds of corporate volunteers have contributed to the project

Nursery group established

Collected seeds & herbarium samples for national Myrtle Rust response

## **Current Challenges**

Myrtle rust

Unknown pathogen affecting Ramarama

Slowing rate of corporate group volunteers (Trend?)

Need to digest outcomes of pine harvesting decision

Getting native mistletoe introductions to strike successfully

Access to – and view from – some photopoint locations now impeded by wilding pines!

Staying on top of rampant spread of wilding pines, acacia, gum trees & other exotic imports

Climate & phenology change – bushfire threats and increased number of droughts & severe weather events

## **Related Documents:**

Catchpool Restoration Project – Revised Planting Plan – 2018